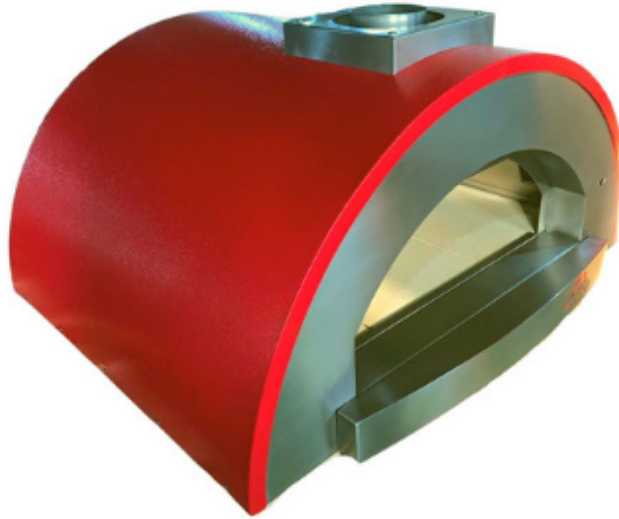




VESUVIO JUNIOR 650



MODEL	FUEL TYPE
Vesuvio Junior 650	Wood

SPECIFICATIONS

WEIGHT:	95	SUGGESTED FUEL	Well seasoned Australian Hardwood
COOKING FLOOR	650 x 500mm	CONSTRUCTION	316 Stainless steel Dual Layer Inner Shell, 304ss Dual Layer Door, High Heat Powder Coated Case, 304ss Dual Insulated Chimney, High Heat Refractory Flooring. 40MM Refractory Silica Floor Tiles
FUEL TYPE	Wood	FUEL CONSUMPTION	2 KG Per Hour *(Australian Hard Wood)
HEAT UP TME	20 Minutes	STAND OPTION	Included
MAX TEMP	480	PIZZA VOLUME	2

Designed and Engineered for Australian Conditions- 3 Year Limited Warranty

